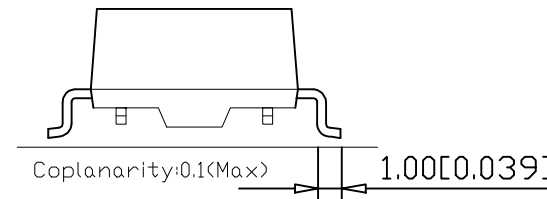
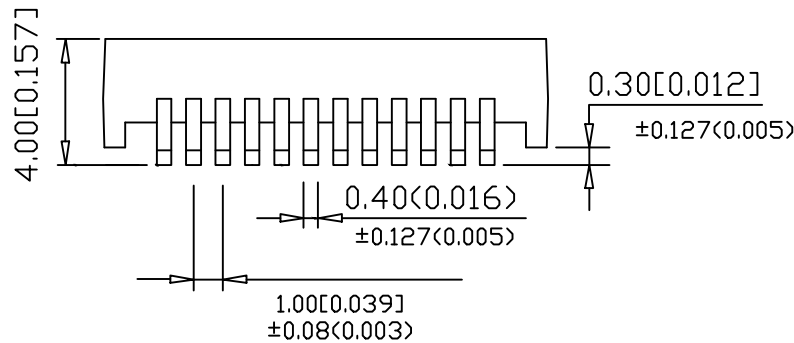
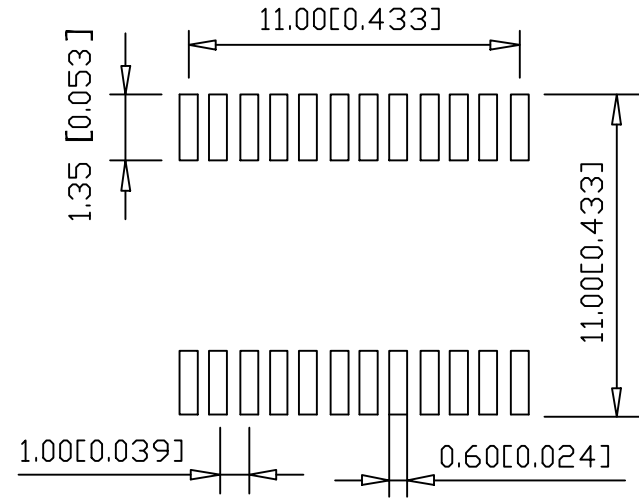
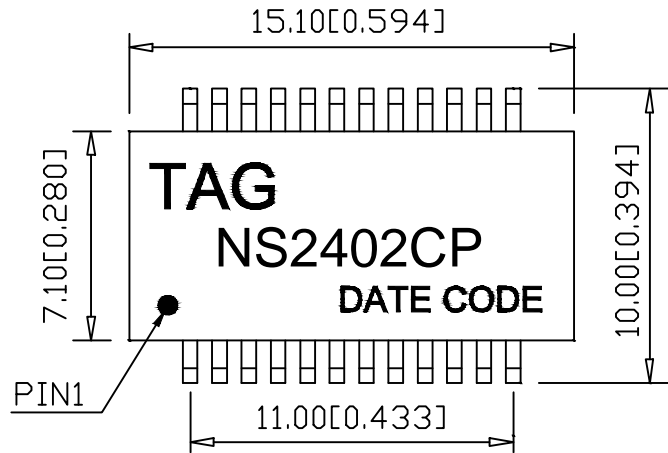


1. MECHANICAL DIMENSIONS :

REV.	CHANGGE DESCRIPTION	DATE
A	New Issue	2023-3-17

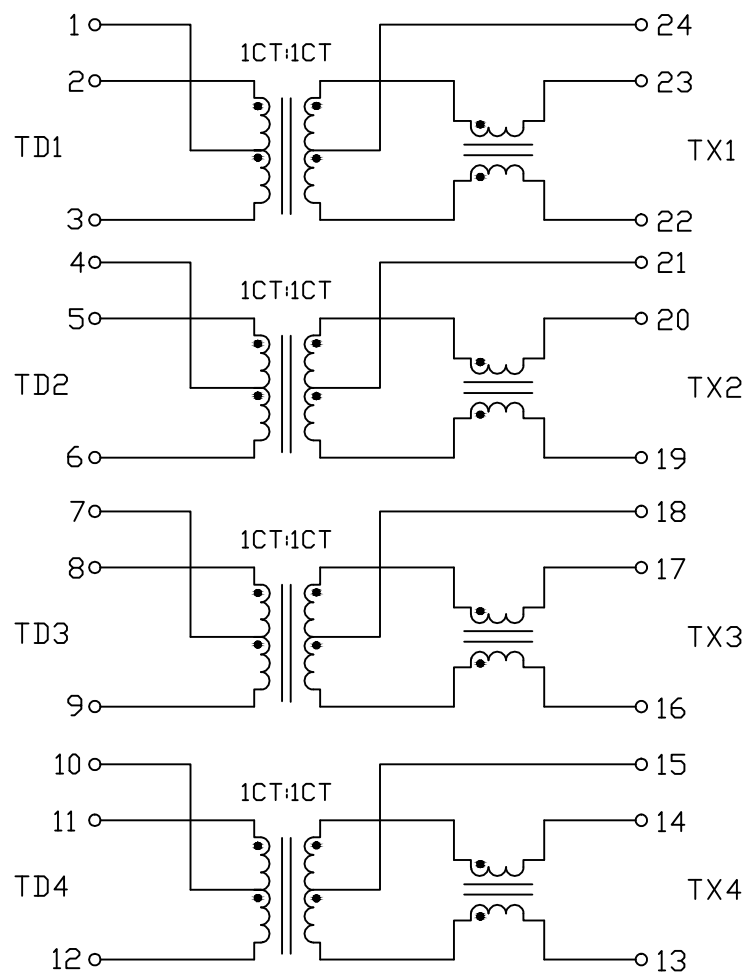


RoHS Compliant

NOTE. DIMENSIONS:MM(INCHES)/UNLESS OTHERWISE SPECIFIED ALL TOLERANCES ARE ±0.50(0.020).

TAG 億客科技股份有限公司 ECO TECH CO., LTD.	A4 SIZE	TAG PART NO.: NS2402CP	VENDOR PART NO.:		Drawn:	Zhang Xue
					Designed:	Yang Tian
THESE DRAWINGS AND SPECIFICATIONS ARE THE PROPERTY OF TAG TECHNOLOGY CO., LTD. AND SHALL NOT BE REPRODUCED OR USED AS THE BASIS FOR THE MANUFACTURE OR SELL OF APPARATUSES OR DEVICES WITHOUT PERMISSION.	THIRD ANGLE PROJECTION	DESCRIPTION: 10G BASE-T TRANSFORMER MODULES	UNIT	mm[inch]	USED ON	Approved: Deane
			SHEET	1 OF 2	REV.	

2. SCHEMATIC:



3. ELECTRICAL CHARACTERISTICS :

TEST NOTES:(25°±5°C)

- TR:(100KHz,0.1V); 100%
PINS:(2,3):(23,22)=1:1±3%;(5,6):(20,19)=1:1±3%
PINS:(8,9):(17,16)=1:1±3%;(11,12):(14,13)=1:1±3%
- LX:(100KHz,0.1V) > 100%
PINS:(2,3),(5,6),(8,9),(11,12)=120uH MIN
- DCR: 100%
PINS:(23,22),(20,19),(17,16),(14,13)=0.8Ω MAXIMUM
- HIPOT: 100%
PINS(2,1,3)TD(23,24,22),(5,4,6)TD(20,21,19)=1500VAC FOR 60 SECONDS
PINS(8,7,9)TD(17,18,16),(11,10,12)TD(14,15,13)=1500VAC FOR 60 SECONDS
- INSERTION LOSS:
-1.0dB Max AT 1MHz TO 50MHz
-1.5dB Max AT 50MHz TO 200MHz
-2.0dB Max AT 200MHz TO 400MHz
-3.0dB Max AT 400MHz TO 500MHz
- RETURN LOSS:
-13dB Min AT 1MHz TO 100MHz
-10dB Min AT 100MHz TO 200MHz
-7dB Min AT 200MHz TO 400MHz
-6dB Min AT 400MHz TO 500MHz
- Cross Talk:
-30dB Min AT 1MHz TO 100MHz
-18dB Min AT 100MHz TO 500MHz
- 720mA CURRENT CAPABILITY.
- OPERATING TEMPERATURE 0°C TO 70°C.

RoHS Compliant

TAG 億客科技股份有限公司
ECO TECH CO., LTD.

A4
SIZE

TAG PART NO.:
NS2402CP

VENDOR PART NO.:

Drawn: Zhang Xue

Designed: Yang Tian

Approved: Deane

Date: 2023-3-17

THESE DRAWINGS AND SPECIFICATIONS ARE THE PROPERTY OF TAG TECHNOLOGY CO., LTD. AND SHALL NOT BE REPRODUCED OR USED AS THE BASIS FOR THE MANUFACTURE OR SELL OF APPARATUSSES OR DEVICES WITHOUT PERMISSION.



DESCRIPTION:
10G BASE-T TRANSFORMER MODULES

UNIT	mm[inch]	USED ON
SHEET	2 OF 2	REV. A